

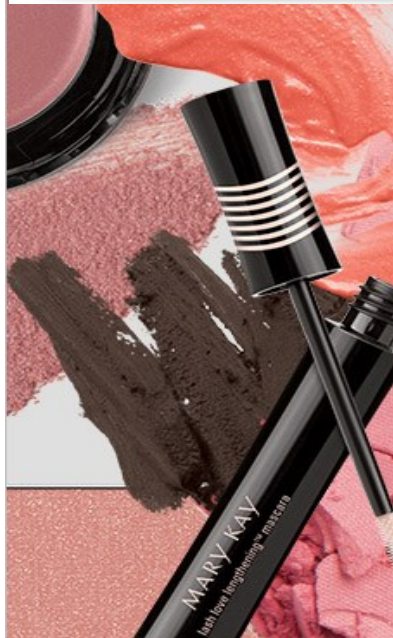


All-American Girl

Flirt with rosy radiance and soft pastels.



Mary Kay is the Official Beauty Sponsor of the 50th Annual Academy of Country Music Awards, airing Sunday, April 19, 2015, at 8/7c on CBS.



- 1 Apply [Pale Blush cream eye color](#) all over the eyelids. Apply [Precious Pink mineral eye color](#) along upper and lower lashlines and blend. Line upper and lower lashlines with [Mary Kay Eyeliner Deep Brown](#) and smudge.
- 2 Brush on two coats of [Lash Love Lengthening™ Mascara in I 2 black](#).
- 3 For a cheeky glow, sweep [Strawberry Cream mineral cheek color](#) to the apples of the cheeks.
- 4 Top lips with [NouriShine Plus Lip Gloss in Fancy Nancy](#).



Celebrity Makeup Artist Tip

"To find the apples of your cheeks, smile and apply blush to the fullest parts of your cheeks, blending in a circular motion."

— Celebrity Makeup Artist Moani Lee

Meet Celebrity Makeup Artist Moani Lee

Moani's Inspiration

The classic girl next door was Celebrity Makeup Artist Moani Lee's inspiration for this rosy, radiant look. It's perfect for women who love all things girly whether that means a pinch of color on their cheeks or a kiss of apricot on her lips.

"This country cutie prefers pastels and a rosy glow to highlight all her best features."

— Moani Lee



Born in Surabaya, Indonesia, Moani Lee attended Christian Chauveau's Technical School of Artistic Makeup in Paris. Moani has worked with Miranda Lambert and Little Big Town, who have both won multiple *ACM Awards™* and *CMA Awards®*. Her clients also include celebrities such as Natalie Portman, Kristen Bell and Julie Bowen. Her work has appeared in magazines such as *Vogue*, *Glamour*, *Elle* and more.